

ANIMATOR4

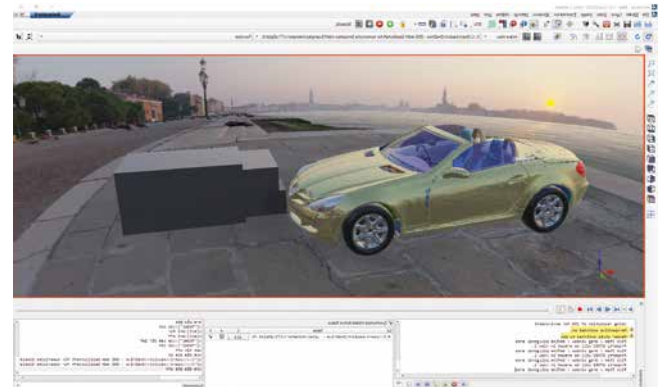
The trendsetting Post-Processor for FEM Analysis

4

ANIMATOR 4

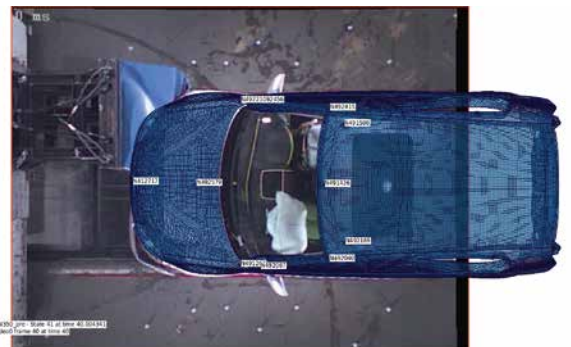
Main features

- Exceptionally efficient and fast handling of large simulation models and result data.
- Support of LS-DYNA, PAM-CRASH, NASTRAN, ABAQUS and further solver interfaces.
- Animator Database4 format for reduced and comfortable data handling.
- Python and TCL interface implemented to enable advanced user script solutions.
- FEMZIP and SDMZIP decompression for Database4/LS-DYNA/PAM-CRASH/RADIOSS interfaces.
- Cross section dialog with option of defining cross sections interactively.
- Flexible model view content (visibility/style/color).
- aPli, MPDB, CORA tool solutions integrated for advanced reporting/evaluation.
- Video and Simulation Data overlay through Video calibration function.
- NVH Dialog to perform various evaluations like FRF/MPF/PPF or MFR and MAC.
- Calculator tool for mathematic curve and function data operations.
- Result documentation make easy with the integrated presentation tool.
- Modula Data structure support for PAM-CRASH and NASTRAN interface format.
- Realistic graphic rendering with PhysicalBased-Rendering (PBR) and Environmental Mapping.



List of Benefits

- Friendly and easy to learn environment with short learning curves.
- Variable command handling concepts.
- On-ground dedicated dialogs.
- Efficient use of system resources.
- Flexible GUI, customizable to any user and discipline needs.
- Perfect synchronization with pre-processing software G4.
- Highly automatable and easy to read session-language.
- Easiness to create automated and tailored processes.



OUR DISTRIBUTOR:



CDH AG

Despag-Straße 3, 85055 Ingolstadt, Germany
Phone: +49 (0) 841 97481-0
e-mail: cdh@cdh-ag.com

www.cdh-ag.com

CDH DETROIT INC.

7 West Square Lake Road
Bloomfield Hills, Michigan 48302-0462, USA
Phone: +1 248 758-2331
e-mail: cdh-na@cdh-ag.com

CDH-JAPAN LTD.

NISSO 13 Bldg. 3F
2-5-1 Shin-Yokohama Kouhoku-ku
Yokohama Kanagawa, 222-0033, Japan
Phone: +81 (0) 45 478-22 77
e-mail: customer_relation@cdh.co.jp